

Inspector No.   
**Primary inspector for Fayeze Banihammad at Orlando  
 Orlando International Airport on June 27, 2001**

Use of name in report: The Commission would agree, if you want, that the Commission will not use your name or your personal information without prior consultation with DHS/CBP about the information we seek to use. Unless we really feel the need, we won't use your name. However, we will not make the flat promise that we will not under any circumstances use your name. (Circumstances when would use name: probably only in making policy recommendations or factual information that requires a quote.)

**Telephone interview date: 05/19/04**

9/11 Law Enforcement Privacy

Who else has interviewed you: DOJ OIG, FBI, DHS, CBP. No – I received email a week or so.

Do you recollect the inspection of this pair Fayeze Banihammad on June 27, 2001? No.

Were you assigned no.  on that date? Yes.

**Length of service at INS.** March 30, 1998 at Orlando and some work at Port Canaveral – cruise ships.

**FLETC.**

- When did you train? How long?
- Training in CT? Don't recall.
- Document fraud? Yes, updates now. Yes – false stamps.
- Databases? Yes and port training. WL of terrorists at port. Knew terrorist WL being checked.
- Mock primary/secondary inspections? At Glynnco; 7 inside, 1 outside land border.
- Cultural training? Yes, at POE Arabic cultures;
- Behavioral training? Yes.
- Language training? 5 weeks Spanish only.
- Firearms training? Ongoing. Firearms carried at private aircraft, escorting detainee, Port Canaveral.
- Facilitate or enforcement? Pre 9/11, enforcement.

**Normal primary.**

- Please describe the standard operating procedures you employ in primary screening, including questions asked, documents reviewed, and databases checked. Documents scanned; I-94 customs declaration. Determine if complete, even if not, correct. Verify visa issue date on I-94. Scan visa or passport, check IBIS for any hits. Country of citizen, purpose, length of stay.

[Redacted]

Not enough time!

- *Length of stay for B1s:* was there a standard length of stay given pre 9/11? Was that a port decision, or national operating policy? If you gave less than the standard time, were there professional repercussions? I did 3 months; sometimes 2 weeks longer than what staying for. No policy set. I never had request for greater than 6 months.
- *Length of stay for B2s:* was there any discretion in length of stay granted B2s pre 9/11? Supervisor approval for greater than 6 months – 1 year. Never had that.

- *Processing time at Orlando:* was there a standard processing time?

[Redacted]

Any professional repercussions if did not meet that processing time? Not for U.S. citizens.

- Return ticket/ flight itinerary. Did you always ask for flight itinerary for unusual travel?

[Redacted]

**Review of passport and visa.**

- What do you look for on the document to determine whether fraud or not?

[Redacted]

- Can you read Arabic stamps/cachets? No.
- Have you received any training in reading documents other than FLETC prior to 9/11? Yes at FDL alerts.
- Does the port always make sure there are inspectors on duty in secondary with expertise in documents and stamps?
- Familiar with the Redbook? No.

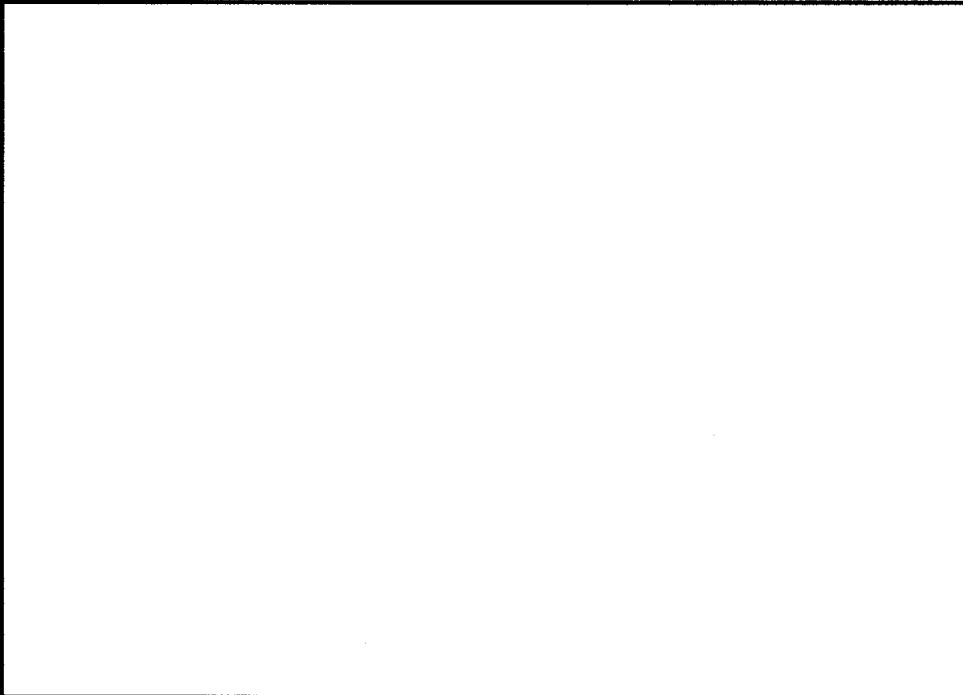
**Treatment of Emirates and Saudis.** Greater Orlando Aviation Authority.

- How did inspectors view Saudis pre 9/11? Ever considered a threat to national security? Allies – good guys in Desert Storm. No.
- At Orlando, did you ever notice that any particular nationalities were treated any differently than others? No.
- What about Saudis in particular?
- How did the treatment affect adjudication of Saudis?
- If you could not communicate with a Saudi, what would you do?
- Were there any Arabic speakers in INS inspections at Orlando? Did you always have to rely on the airlines? No.
- Would the airline help you out? Most spoke English.

**Profiling.**

- What unusual characteristics about an alien applying for admission would cause you concern and result in a referral to secondary?

- 
- 
- 
- 
- 
- 
- 
- 
- 
- 



- **Banihammad's primary inspection.** I-94: his stamp. Errors no concern pre 9/11. #2 and #10. Customs Declaration: #11 different – not commercial; pre 9/11, no concern for me, didn't sign his. Customs would take a look
-

again and should fill in.

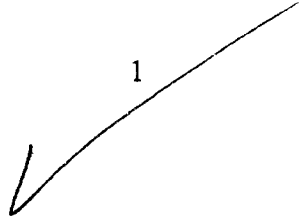
[redacted] 1 pertains to how many people carrying that declaration. We had to stamp it but if not filled out, just fill out. 34 things we do with it.

- Where do you normally work?
- Where were you working on June 27, 2001?
- Do you recollect Banihammad?
- Please describe how you conducted the inspection and what transpired, to the best of your recollection.

**Changes at DHS.**

- What changes do you see on the front line with the new CBP?
- Are you familiar with National Targeting Center? Yes.
- What effect has US VISIT had on entry and the inspection process? Hardly any fraud with US visas since in place; use of alias with print, although visa still valid.
- Use and value of SEVIS. Yes, all valid.
- Adequate access to DOS visa via the Consular Consolidated Database. Helpful – datashare: IBIS secondary Aisle 9510 – foil number on visa and pull up biometric print and photo.
- If you had a message for Commissioner Bonner what would it be? Get rid of visa waiver.
- What if you had stolen passport #s automatically checked? Yes.
- What if you had technology that could detect fraudulent documents? Yes.
- What if you had access to an electronic Redbook? Yes.
- Require return ticket? Won't keep staying illegally.
- Tailoring length of stay? Not Helpful.

[redacted] Inspector No. [redacted]  
Primary inspector for Fayeze Banihammad at Orlando  
Orlando International Airport on June 27, 2001



Use of name in report: The Commission would agree, if you want, that the Commission will not use your name or your personal information without prior consultation with DHS/CBP about the information we seek to use. Unless we really feel the need, we won't use your name. However, we will not make the flat promise that we will not under any circumstances use your name. (Circumstances when would use name: probably only in making policy recommendations or factual information that requires a quote.)

*I rec'd email a week or so.*

Who else has interviewed you: DOJ OIG, FBI, DHS, CBP. No.

Do you recollect the inspection of this pair Fayeze Banihammad on June 27, 2001? No.

Were you assigned no. [redacted] on that date? *Yes.*

Length of service at INS. [redacted] *@ Orlando + some work Port Canaveral - cruise ships.*  
*Doj private pre 9/11.*

FLETC.

- When did you train? How long? [redacted]
- Training in CT? *don't recall*
- Document fraud? *yes. updates now. yes - false stamps.*
- Databases? *yes. + port training. WL of terrorists @ port. knew terrorist WL but checked.*
- ~~Mock~~ <sup>primary</sup> secondary inspections? *@ Glenco. 7 inside 1 outside land border.*
- Cultural training? *Yes @ POE Arabic cultures - way wave considered bad -*
- Behavioral training? *yes.*
- Language training? *5 who Spanish only.*
- Firearms training? *ongoing.*

*Yes @ private aircraft escort detach*  
*Facilitate / Enforcement - port Canaveral pre 9/11.*

Normal primary.

- Please describe the standard operating procedures you employ in primary screening, including questions asked, documents reviewed, and databases checked. *Docs scanned, I-94, customs decl. Determine if complete, even if not correct. Verify visa issue date on I-94. Scan visa or passport, check IBS for any hits. Country of citizens, purpose, length of stay.*

[Redacted]

- *Not enough time!*  
Length of stay for B1s: was there a standard length of stay given pre 9/11? Was that a port decision, or national operating policy? If you gave less than the standard time, were there professional repercussions?  
*I did 3 mos.; sometimes 2 mos longer than what stay for. No policy set. I would get never had request for*
- Length of stay for B2s: was there any discretion in length of stay granted B2s pre 9/11? *Super approval 7 6 mos - 1 yr. Never had that.*

- Processing time at Orlando: was there a standard processing time, [Redacted]

[Redacted] Any professional repercussions if did not meet that processing time? *< for US citizens*

- Was there a port policy about referrals to secondary; a certain criteria that had to be met to refer to secondary?
- Return ticket/ flight itinerary. Did you always ask for flight itinerary for unusual travel? For a return ticket?

[Redacted]

Review of passport and visa.

- What do you look for on the document to determine whether fraud or not?

[Redacted]

*not familiar - but only look at American - other country entry stamps to determine overlays.*

- Can you read Arabic stamps/cachets? *No.*
- Have you received any training in reading documents other than FLETC prior to 9/11? *Yes @ FDL alerts.*

- Does the port always make sure there are inspectors on duty in secondary with expertise in documents and stamps?
- Familiar with the Redbook? *No.*

Treatment of Emirates and Saudis.

*Greater Orlando Aviation Authority.*

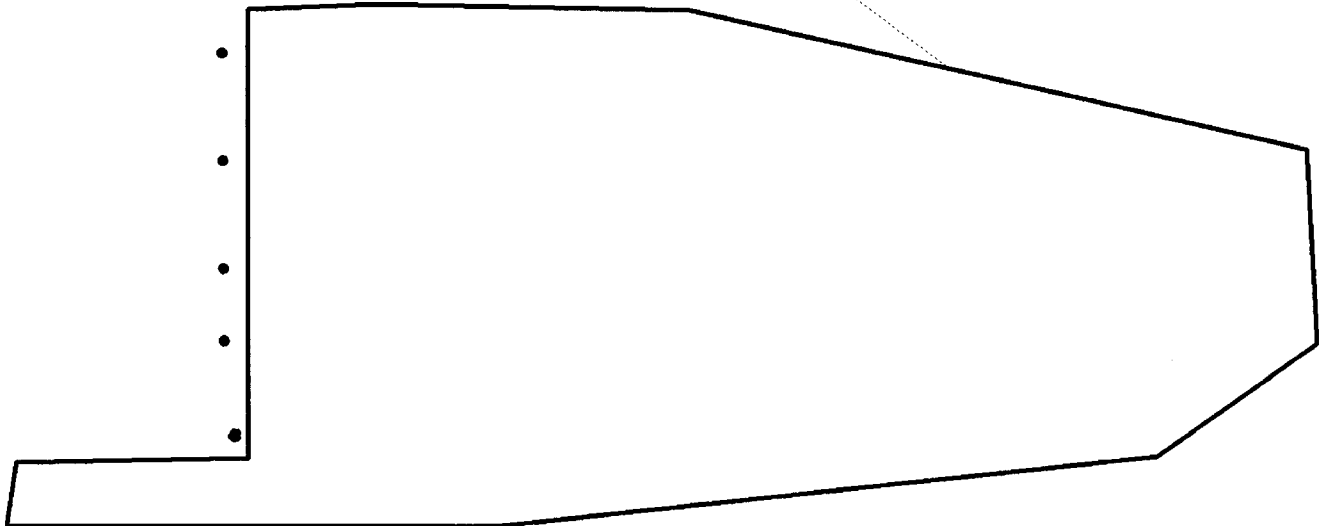
- How did inspectors view Saudis pre 9/11? Ever considered a threat to national security? *- Allies - good guys in Desert Storm. - No.*
- At <sup>*Orlando*</sup>~~Miami~~, did you ever notice that any particular nationalities were treated any differently than others? *No.*

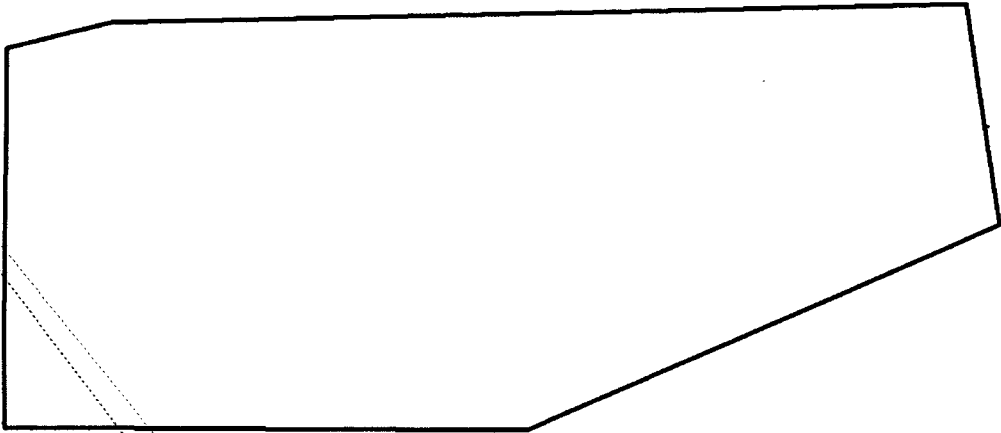
- What about Saudis in particular?
- How did the treatment affect adjudication of Saudis?
- If you could not communicate with a Saudi, what would you do?
- Were there any Arabic speakers in INS inspections at Orlando? Did you always have to rely on the airlines? *No.*
- *Most spoke English.*  
Would the airline help you out?

9/11 Law Enforcement Sensitive

Profiling.

- What unusual characteristics about an alien applying for admission would cause you concern and result in a referral to secondary?





- Banihammad's primary inspection.
- Where do you normally work?
- Where were you working, on June 27, 2001?

*I-94: his stamp.  
Errors no concern pre 9/11.  
#2 + #10.*

*Customs Declaration:  
#11 different - not commercial  
pre 9/11 - no concern for me.  
didn't sign his.  
Customs would take a look of anh.  
& should fill in.*

Do you recollect Banihammad?

Please describe how you conducted the inspection and what transpired, to the best of your recollection.

Changes at DHS.

*wouldn't even ask for \$ amt.*

- What changes do you see on the front line with the new CBP?
- Are you familiar with National Targeting Center?

*① pertains to how many people carry that declaration.  
no guidance we had to stamp it, but if not filled out, just fill out.*

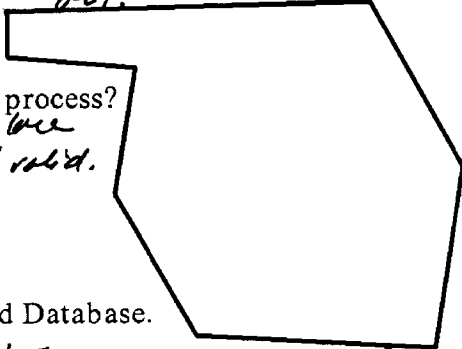
- What effect has US VISIT had on entry and the inspection process?  
*- hardly any fraud w/ US visas since in place  
- use of alias w/print, although visa still valid.*
- Use and value of SEVIS.  
*Yes. All valid.*
- Adequate access to DOS visa via the Consular Consolidated Database.

*helpful. DataShare: -*

- If you had a message for Commissioner Bonner what would it be?

*Get rid of visa waiver.*

*IBIS 2ndary Aisle 9510 - fail #  
on visa +  
pull up  
biometric  
print + photo.*





- What if you had stolen passport #s automatically checked?

YES.

- What if you had technology that could detect bad ink on a stamp?  
fraudulent docs.

YES.

- What if you had access to an electronic Redbook?

YES.

- require return ticket?  
won't keep staying illegally.
- tailoring length of stay?  
not helpful.

26 HAVE YOU OR SOMEONE ACTING FOR YOU EVER INDICATED TO A U.S. CONSUL OR AN IMMIGRATION EMPLOYEE A DESIRE TO IMMIGRATE TO THE U.S. OR HAVE YOU EVER ENTERED A U.S. VISA LOTTERY?

NO  YES

HAS ANYONE EVER FILED AN IMMIGRANT VISA PETITION ON YOUR BEHALF?

NO  YES

HAS A LABOR CERTIFICATION FOR EMPLOYMENT IN THE U.S. EVER BEEN REQUESTED BY YOU OR ON YOUR BEHALF?

NO  YES

27 ARE ANY OF THE FOLLOWING IN THE U.S. RESIDE IN THE U.S. OR HAVE U.S. LEGAL PERMANENT RESIDENCE? (Include YES or NO and indicate that person's status in the U.S. - i.e., studying, working, permanent resident, U.S. citizen, etc.)

Spouse:  YES  NO  Fiancee  YES  NO  Neither

YES NO  Fiancee  YES  NO  Fiancee  YES  NO  Fiancee  YES  NO  Fiancee

YES NO  Fiancee  YES  NO  Fiancee  YES  NO  Fiancee

28 WERE YOU EVER LIVED FOR THE PAST FIVE YEARS? DO NOT INCLUDE PLACES YOU HAVE VISITED FOR PERIODS OF SIX MONTHS OR LESS

Country: \_\_\_\_\_ State: \_\_\_\_\_ Administrative District: \_\_\_\_\_

*DAE HHO (F) BIKAN*

29 WARRIANT ALL APPLICANTS MUST READ AND CHECK THE APPROPRIATE BOX FOR EACH ITEM

A visa may only be issued to persons who are within specific categories defined by law as admissible to the United States (listed) when a waiver is obtained in advance. Are any of the following applicable to you?

• Have you ever been afflicted with a communicable disease of public health significance?  YES  NO

• Have you ever been afflicted with a mental disorder, or been a drug abuser or addict? (21724111)  YES  NO

• Have you ever been arrested or convicted for any offense or crime, even though subject was a juvenile or the offense or conviction was later expunged, or the person was pardoned or the conviction was annulled? (21724112)  YES  NO

• Do you seek to enter the United States to engage in report covered activities, subversive or terrorist activities, or any other criminal purposes? Are you a member of, or have you ever participated or attempted to participate in, any organization, society, group, or movement, or have you ever participated in political or propaganda activities for the Government of Germany? (21724113)  YES  NO

• Have you ever been refused admission to the U.S. as the subject of a deportation order, or attempt to obtain a visa or entry to obtain a visa, entry into the U.S. or reentry into the U.S. after having been deported, or have you ever been in the U.S. on a "parole" or "temporary admission" status? (21724114)  YES  NO

• Have you ever been a member of, or have you ever participated in, any organization, society, group, or movement, or have you ever participated in political or propaganda activities for the Government of Germany? (21724115)  YES  NO

• Have you ever been a member of, or have you ever participated in, any organization, society, group, or movement, or have you ever participated in political or propaganda activities for the Government of Germany? (21724116)  YES  NO

• Have you ever been a member of, or have you ever participated in, any organization, society, group, or movement, or have you ever participated in political or propaganda activities for the Government of Germany? (21724117)  YES  NO

• Have you ever been a member of, or have you ever participated in, any organization, society, group, or movement, or have you ever participated in political or propaganda activities for the Government of Germany? (21724118)  YES  NO

• Have you ever been a member of, or have you ever participated in, any organization, society, group, or movement, or have you ever participated in political or propaganda activities for the Government of Germany? (21724119)  YES  NO

• Have you ever been a member of, or have you ever participated in, any organization, society, group, or movement, or have you ever participated in political or propaganda activities for the Government of Germany? (21724120)  YES  NO

• Have you ever been a member of, or have you ever participated in, any organization, society, group, or movement, or have you ever participated in political or propaganda activities for the Government of Germany? (21724121)  YES  NO

• Have you ever been a member of, or have you ever participated in, any organization, society, group, or movement, or have you ever participated in political or propaganda activities for the Government of Germany? (21724122)  YES  NO

• Have you ever been a member of, or have you ever participated in, any organization, society, group, or movement, or have you ever participated in political or propaganda activities for the Government of Germany? (21724123)  YES  NO

• Have you ever been a member of, or have you ever participated in, any organization, society, group, or movement, or have you ever participated in political or propaganda activities for the Government of Germany? (21724124)  YES  NO

• Have you ever been a member of, or have you ever participated in, any organization, society, group, or movement, or have you ever participated in political or propaganda activities for the Government of Germany? (21724125)  YES  NO

• Have you ever been a member of, or have you ever participated in, any organization, society, group, or movement, or have you ever participated in political or propaganda activities for the Government of Germany? (21724126)  YES  NO

• Have you ever been a member of, or have you ever participated in, any organization, society, group, or movement, or have you ever participated in political or propaganda activities for the Government of Germany? (21724127)  YES  NO

• Have you ever been a member of, or have you ever participated in, any organization, society, group, or movement, or have you ever participated in political or propaganda activities for the Government of Germany? (21724128)  YES  NO

• Have you ever been a member of, or have you ever participated in, any organization, society, group, or movement, or have you ever participated in political or propaganda activities for the Government of Germany? (21724129)  YES  NO

• Have you ever been a member of, or have you ever participated in, any organization, society, group, or movement, or have you ever participated in political or propaganda activities for the Government of Germany? (21724130)  YES  NO

• Have you ever been a member of, or have you ever participated in, any organization, society, group, or movement, or have you ever participated in political or propaganda activities for the Government of Germany? (21724131)  YES  NO

• Have you ever been a member of, or have you ever participated in, any organization, society, group, or movement, or have you ever participated in political or propaganda activities for the Government of Germany? (21724132)  YES  NO

• Have you ever been a member of, or have you ever participated in, any organization, society, group, or movement, or have you ever participated in political or propaganda activities for the Government of Germany? (21724133)  YES  NO

• Have you ever been a member of, or have you ever participated in, any organization, society, group, or movement, or have you ever participated in political or propaganda activities for the Government of Germany? (21724134)  YES  NO

• Have you ever been a member of, or have you ever participated in, any organization, society, group, or movement, or have you ever participated in political or propaganda activities for the Government of Germany? (21724135)  YES  NO

• Have you ever been a member of, or have you ever participated in, any organization, society, group, or movement, or have you ever participated in political or propaganda activities for the Government of Germany? (21724136)  YES  NO

• Have you ever been a member of, or have you ever participated in, any organization, society, group, or movement, or have you ever participated in political or propaganda activities for the Government of Germany? (21724137)  YES  NO

• Have you ever been a member of, or have you ever participated in, any organization, society, group, or movement, or have you ever participated in political or propaganda activities for the Government of Germany? (21724138)  YES  NO

• Have you ever been a member of, or have you ever participated in, any organization, society, group, or movement, or have you ever participated in political or propaganda activities for the Government of Germany? (21724139)  YES  NO

• Have you ever been a member of, or have you ever participated in, any organization, society, group, or movement, or have you ever participated in political or propaganda activities for the Government of Germany? (21724140)  YES  NO

• Have you ever been a member of, or have you ever participated in, any organization, society, group, or movement, or have you ever participated in political or propaganda activities for the Government of Germany? (21724141)  YES  NO

• Have you ever been a member of, or have you ever participated in, any organization, society, group, or movement, or have you ever participated in political or propaganda activities for the Government of Germany? (21724142)  YES  NO

• Have you ever been a member of, or have you ever participated in, any organization, society, group, or movement, or have you ever participated in political or propaganda activities for the Government of Germany? (21724143)  YES  NO

• Have you ever been a member of, or have you ever participated in, any organization, society, group, or movement, or have you ever participated in political or propaganda activities for the Government of Germany? (21724144)  YES  NO

• Have you ever been a member of, or have you ever participated in, any organization, society, group, or movement, or have you ever participated in political or propaganda activities for the Government of Germany? (21724145)  YES  NO

• Have you ever been a member of, or have you ever participated in, any organization, society, group, or movement, or have you ever participated in political or propaganda activities for the Government of Germany? (21724146)  YES  NO

• Have you ever been a member of, or have you ever participated in, any organization, society, group, or movement, or have you ever participated in political or propaganda activities for the Government of Germany? (21724147)  YES  NO

• Have you ever been a member of, or have you ever participated in, any organization, society, group, or movement, or have you ever participated in political or propaganda activities for the Government of Germany? (21724148)  YES  NO

• Have you ever been a member of, or have you ever participated in, any organization, society, group, or movement, or have you ever participated in political or propaganda activities for the Government of Germany? (21724149)  YES  NO

• Have you ever been a member of, or have you ever participated in, any organization, society, group, or movement, or have you ever participated in political or propaganda activities for the Government of Germany? (21724150)  YES  NO

• Have you ever been a member of, or have you ever participated in, any organization, society, group, or movement, or have you ever participated in political or propaganda activities for the Government of Germany? (21724151)  YES  NO

• Have you ever been a member of, or have you ever participated in, any organization, society, group, or movement, or have you ever participated in political or propaganda activities for the Government of Germany? (21724152)  YES  NO

• Have you ever been a member of, or have you ever participated in, any organization, society, group, or movement, or have you ever participated in political or propaganda activities for the Government of Germany? (21724153)  YES  NO

• Have you ever been a member of, or have you ever participated in, any organization, society, group, or movement, or have you ever participated in political or propaganda activities for the Government of Germany? (21724154)  YES  NO

• Have you ever been a member of, or have you ever participated in, any organization, society, group, or movement, or have you ever participated in political or propaganda activities for the Government of Germany? (21724155)  YES  NO

• Have you ever been a member of, or have you ever participated in, any organization, society, group, or movement, or have you ever participated in political or propaganda activities for the Government of Germany? (21724156)  YES  NO

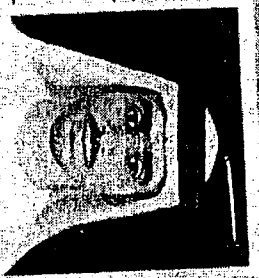
• Have you ever been a member of, or have you ever participated in, any organization, society, group, or movement, or have you ever participated in political or propaganda activities for the Government of Germany? (21724157)  YES  NO

• Have you ever been a member of, or have you ever participated in, any organization, society, group, or movement, or have you ever participated in political or propaganda activities for the Government of Germany? (21724158)  YES  NO

• Have you ever been a member of, or have you ever participated in, any organization, society, group, or movement, or have you ever participated in political or propaganda activities for the Government of Germany? (21724159)  YES  NO

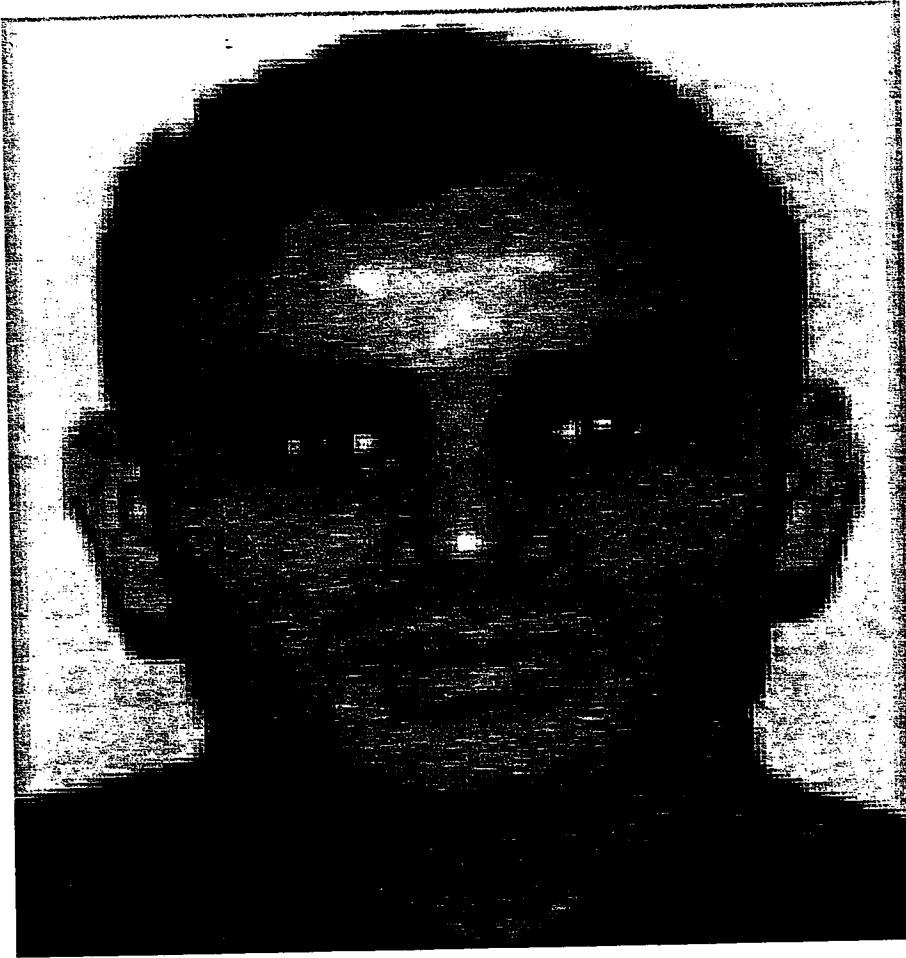
• Have you ever been a member of, or have you ever participated in, any organization, society, group, or movement, or have you ever participated in political or propaganda activities for the Government of Germany? (21724160)  YES  NO

DO NOT WRITE IN THIS SPACE



OPTIONAL FORM 156 (Rev. 1 98) PAGE 2  
Department of State

K3111 020208004 HC  
FBI LABORATORY



**Abu Dhabi BANIHAMMAD**  
**[a/k/a Fayez Ahmed]**  
**Flight # 175**

**DOE: 06/27/01**  
**POE: Orlando, Florida**  
**Class of Entry: B-2 Visitor valid until 12/26/2001**  
**Country of Citizenship: United Arab Emirates**

NIXDTVW

IMMIGRANT INFORMATION SY. M  
DETAIL VIEW

DATE: 10/13/01  
TIME: 11:29:11

LN: BANIHAMMAD  
PASSPORT NUMBER  
ARRIVAL

FN: ABU DHABI      DOB: 03/19/1977      COC: UAE  
: A0929256      GENDER: M      COR: UAE  
ADMN REC:      1 OF 1

MISSION NUMBER : 22055644506  
MISSION CLASS : B2  
ADMISSION DATE : JUN 27, 2001  
ADMITTED TO DATE : DEC 26, 2001  
PORT OF ENTRY : ORLANDO FL

9/11 Law Enforcement Privacy

INSPECTOR NUMBER :

VISA ISSUE POST :

VISA ISSUE DATE : JUN 18, 2001

ARRIVAL CARRIER : VS VIRGIN ATLANTIC AIRLINES

AIRLINE FLIGHT NUMBER : 00015      TRAVEL MODE: AIR

INTENDED STREET ADDRESS: HYATT INTERNATION DR

INTENDED CITY ADDRESS : ORLANDO      STATE: FLORIDA

MICROFILM NUMBER :

DEPARTURE

ACTUAL DEPARTURE CARRIER :

DEPARTURE DATE :

ACTUAL DEPARTURE FLIGHT #:

PORT OF DEPARTURE :

SCREEN HELP:

PF1=NEXT PAGE    PF2=PRIOR PAGE    PF4=RETURN    PF5=HELP    PF6=MAIN MENU

PF7=FIRST PAGE    PF8=LAST PAGE    PF10=INQUIRY

I900021 LAST PAGE DISPLAYED

Admission Number

220556445 06

Immigration and Naturalization Service  
I-94  
Arrival Record

U.S. IMMIGRATION ORL ADMITTED

JUN 27 2001  
B2

CLASS UNTIL DEC 26 2001

1. Family Name BANI HAMMAD		3. Birth Date (Day/Mo/Yr) 19103172	
2. First (Given) Name ABU DHABI		5. Sex (Male or Female) MALE	
4. Country of Citizenship EMIRATES		7. Airline and Flight Number U.S. 15	
6. Passport Number A0929256		9. City Where You Boarded DUB	
8. Country Where You Live EMIRATES		11. Date Issued (Day/Mo/Yr) 180601	
10. City Where Visa Was Issued Orlando		12. Address While in the United States (Number and Street) HYATT INTERNATIONAL DR	
13. City and State Orlando FL			

# WELCOME TO THE UNITED STATES



DEPARTMENT OF THE TREASURY  
UNITED STATES CUSTOMS SERVICE  
CUSTOMS DECLARATION

FORM APPROVED  
OMB NO. 1515-0041

19 CFR 122.27, 148.12, 148.13, 148.110, 148.111

Each arriving traveler or head of family must provide the following information (only ONE written declaration per family is required):

1. Name: FAYEZ RASHID AHMED HASSAN  
Last First Middle Initial
2. Date of Birth: 19/3/73 3. Airline/Flight: 015  
Day Month Year
4. Number of family members traveling with you: \_\_\_\_\_
5. U.S. Address: Hotel Hyatt  
City: Orlando State: FL
6. I am a U.S. Citizen  YES  NO  
If No, Country: UAE
7. I reside permanently in the U.S.  YES  NO  
If No, Expected Length of Stay: 1 month
8. The purpose of my trip is or was  BUSINESS  PLEASURE
9. I am/we are bringing fruits, plants, meats, food, soil, birds, snails, other live animals, farm products, or I/we have been on a farm or ranch outside the U.S.  YES  NO
10. I am/we are carrying currency or monetary instruments over \$10,000 U.S. or foreign equivalent.  YES  NO
11. The total value of all goods I/we purchased or acquired abroad and am/are bringing to the U.S. is (see instructions under Merchandise on reverse side): 500 } goods 500  
US Dollars

► MOST MAJOR CREDIT CARDS ACCEPTED.  
SIGN ON REVERSE SIDE AFTER YOUR ENTRY WARNING.  
(Do not write below this line)

INSPECTOR'S NAME \_\_\_\_\_  
BADGE NO. \_\_\_\_\_  
JUN 27 2001  
ADMITTED AREA 7908

Paperwork Reduction Act Notice: The Paperwork Reduction Project (1515-0041) says we must ask you why we are collecting this information, how we will use it and whether you have to provide it. We ask for this information to ensure that travelers are complying with United States Customs, Agriculture and Currency laws of the United States. We will use the information to ensure that travelers are complying with these laws and to allow us to figure and collect the right amount of duties and taxes. Your response is mandatory.

Statement required by 5 CFR 1320.21: The estimated average burden associated with this collection of information is 3 minutes per respondent or recordkeeper depending on individual circumstances. Comments concerning the accuracy of this burden estimate and suggestions for reducing this burden should be directed to U.S. Customs Service, Paperwork Management Branch, Washington, DC 20229, and to the Office of Management and Budget, Paperwork Reduction Project (1515-0041), Washington, DC 20503.

Customs Form 6059B (092089)

**WARNING**

The smuggling or unlawful importation of controlled substances regardless of amount is a violation of U.S. law.

Accuracy of your declaration may be verified through questioning and physical search

**AGRICULTURAL PRODUCTS**

To prevent the entry of dangerous agricultural pests the following are restricted: Fruits, vegetables, plants, plant products, soil, meats, meat products, birds, snails, and other live animals or animal products. Failure to declare all such items to a Customs/Agriculture Officer can result in fines or other penalties.

**CURRENCY AND MONETARY INSTRUMENTS**

The transportation of currency or monetary instruments, regardless of amount, is legal; however, if you take out of or bring into (or are about to take out of or bring into) the United States more than \$10,000 (U.S. or foreign equivalent, or a combination of the two) in coin, currency, travelers checks or bearer instruments such as money orders, checks, stocks or bonds, you are required by law to file a report on a Form 4790 with the U.S. Customs Service. If you have someone else carry the currency or instruments for you, you must also file the report. FAILURE TO FILE THE REQUIRED REPORT OR FALSE STATEMENTS ON THE REPORT MAY LEAD TO SEIZURE OF THE CURRENCY OR INSTRUMENTS AND TO CIVIL PENALTIES AND/OR CRIMINAL PROSECUTION

**MERCHANDISE**

In Item 11, **U.S. residents** must declare the total value of ALL articles acquired abroad (whether new or used, whether dutiable or not, and whether obtained by purchase, as a gift, or otherwise), including those purchases made in DUTY FREE stores in the U.S. or abroad, which are in their or their family's possession at the time of arrival. **Visitors** must declare in Item 11 the total value of all gifts and commercial items, including samples they are bringing with them.

The amount of duty to be paid will be determined by a Customs officer. U.S. residents are normally entitled to a duty free exemption of \$400 on those items accompanying them; non-residents are normally entitled to an exemption of \$100. Both residents and non-residents will normally be required to pay a flat 10% rate of duty on the first \$1,000 above their exemptions.

If the value of goods declared in Item 11 EXCEEDS \$1,400 PER PERSON, then list ALL articles below and show price paid in U.S. dollars or, for gifts, fair retail value. If additional space is needed, continue on another Customs Form 6059B.

DESCRIPTION OF ARTICLES	PRICE	CUSTOMS USE
TOTAL		

**IF YOU HAVE ANY QUESTIONS ABOUT WHAT MUST BE REPORTED OR DECLARED ASK A CUSTOMS OFFICER.**

*I have read the above statements and have made a truthful declaration.*

-----  
 SIGNATURE \_\_\_\_\_ DATE (Day/Month/Year) \_\_\_\_\_  
 \* U.S.G.P.O. 1990 - 744-875 Customs Form 6059B (092089) (Back)